

Mission Bay PET Scan - Adult Acute and Transitional Care Patient Transports Monday-Friday 09-1500 only

24-hours in advance coordination needed with MB Nuclear Med
 Arrival time – 30 minutes prior to scheduled appointment time, average scan time 1 hour, 45 minutes
 Radiologist determination if separate PET and CT scans can be fused
 Mission Bay PET Scanner : Weigh limit 385 pounds

*If PET Scan can not be done at Mission Bay due to weight limitation, consider ordering PET/CT as outpatient after discharge

Provider orders PET scan to be performed at MB

Are there other alternatives?

Schedule other diagnostic procedure or Complete PET Scan as out patient

MB RADIOLOGY DEPARTMENT-

- Confirm with ordering provider regarding PET scan need
- If after 60 min, tech unable to reach provider- bedside RN notified (bedside RN will need to f/u with provider)
- Measure patient prior to MB transport to ensure compatability with scanner
- Notify attending Nuclear Medicine attending radiologist to initiate justification conversation with ordering provider
- If urgent need for PET/CT, radiologist to initiate justification conversation with ordering provider
- Initiate Checklist requirements with bedside RN
 - NPO for 6 hours, water only
 - Blood sugar 120-200
 - no insulin for 12 hours
 - no dextrose in IV fluids

Ordering provider:

- Confirms order for PET scan
- If PET scan deemed not necessary or urgent, provider cancels order for PET scan
- Confirm that patient can tolerate laying flat for duration of PET scan
- Enters order for Checklist requirement, including IV access
- Ensures that patient is clinically stable and safe for transport off site.
- Communicate with MB E1

MB Nuclear Medicine attending and RADIOLOGY DEPARTMENT

- Receives/reviews order from ordering provider for PET Scan
- Confirms availability of radioisotope dose and camera time availability (in scanner at 1 hour)
- Coordinate timing of scan
- Confirms communication between E1 and Ordering Provider
- Notifies patient bedside RN of scheduled PET Scan time
- Notifies MB Radiology RN of scheduled PET Scan time

Bedside RN:

- Contacts Transport RN
- Verify completion of checklist requirement:
 - NPO for 6 hours, water only
 - Blood sugar 120-200
 - no insulin for 12 hour
 - no dextrose in IV fluids
- *notify MD if patient on steroids or glucagon

Transport RN:

- Assess patient
- If any issues with Transport, will discuss with ordering provider
- Confirm level of Transport and informs bedside RN
- Confirms scheduled PET scan time with bedside RN
- Recommends pick up time to bedside RN (patient to arrive 30 min prior to scheduled scan time)

Bedside RN:

- Contacts Case Manager to arrange Transport (based on Transport RN recommended pick up time)

Case Manager:

- contacts AMR to arrange transport
- If any issues with transport time, will discuss with bedside RN
- Confirm pick up time with Transport RN

Bedside RN:

- Completes SBAR Handoff for Transport RN Fom

Transport occurs

Transport RN

- notifies MB PET scan when en route
- Transport RN to remain with patient

NUCLEAR MED RN:

- Responsible for tasks related to PET Scan

PET Scan complete

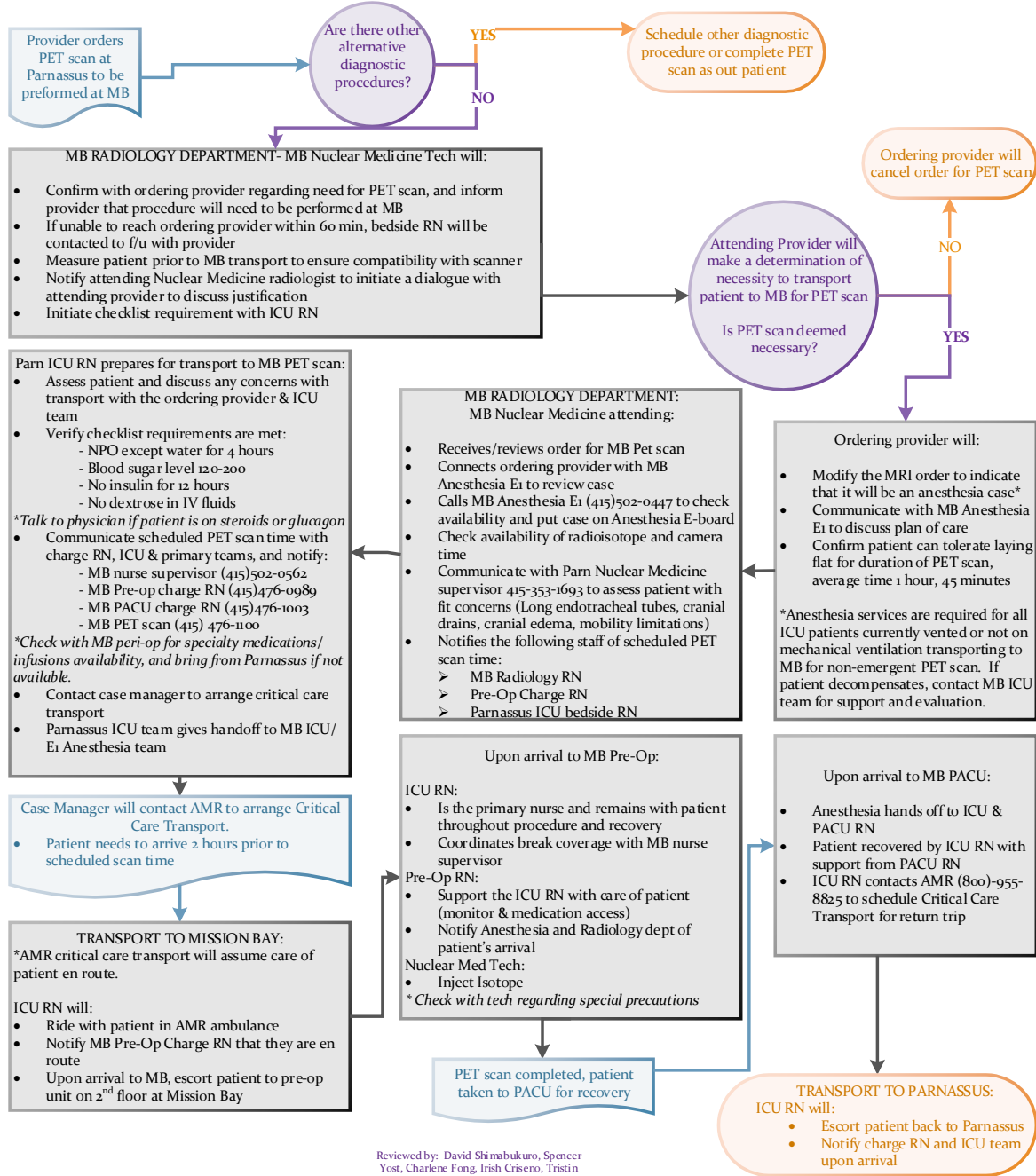
Transport RN

- Transport RN determines level of transport and contacts AMR to schedule return trip
- escorts patient back to Home Unit
- hand-off to bedside RN

Reviewed by:
 Charlene Fong,
 Irish Criseno,
 Chloe Wendorf,
 Michael White

Non-Emergent Parnassus to Mission Bay PET Scan Workflow for ICU Patients

Workflow overview:
The following workflow applies Monday-Friday 0900-1500. 24 hour in advance coordination with MB Nuclear Medicine is required. All ICU patients who require an PET Scan at Mission Bay will be booked as anesthesia case. Patients must arrive to Mission Bay 2 hours ahead of scheduled scan time. Scans ordered on Friday, may not be done over the weekend depending on anesthesia availability. Anticipate scans ordered on Friday to be performed the follow Monday. *385LB weight limit.



Reviewed by: David Shimabukuro, Spencer Yost, Charlene Fong, Irish Criseno, Tristin Penlend, Amy Larsen, and Hildy Schell